

Chair Covers

*Rouge & Spandex chair covers will fit any standard banquet chair.
Only scuba chair covers can fit on folding chairs.*



Rouge



White



Ivory



Black



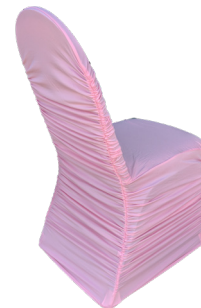
Grey / Silver



Navy Blue



Blush



Light Pink



Eggplant



Red

Spandex



White



Ivory



Black



White
fits on folding chair



Aqua



Black & White Striped



Cheetah



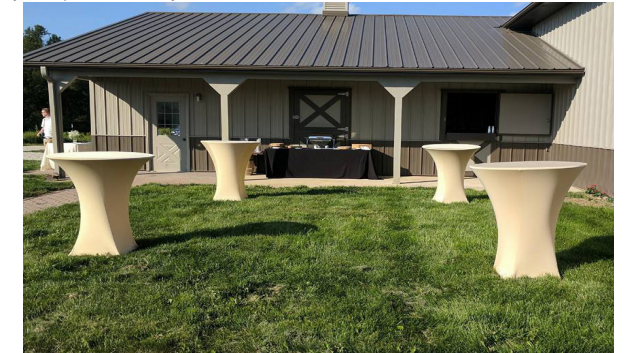
Zebra

Cocktail Spandex

Spandex cocktail table covers will present a sleek setting for your next wedding or event. These stylish table covers come in a variety of complementing colors and are the perfect way to tie any look/theme together! Check out our under table lighting as well to add another fun dimension!

Dimensions: Fit on 30"-36" Top; 42" Tall Cocktail Tables.

Must have four feet on bottom for spandex to fit table.



White



White Rouge



Ivory



Champagne



Brown



Black



Red



Apple Red



Burgundy



Orange



Bright Yellow



Yellow



Navy Blue



Aqua Blue



Eggplant



Zebra



Black & White Striped



Cheetah

If you are looking for a color that is not listed, please inquire. Other colors may be available to order for an additional charge.

If you are looking for a color that is not listed, please inquire. Other colors may be available to order for an additional charge.

Napkins

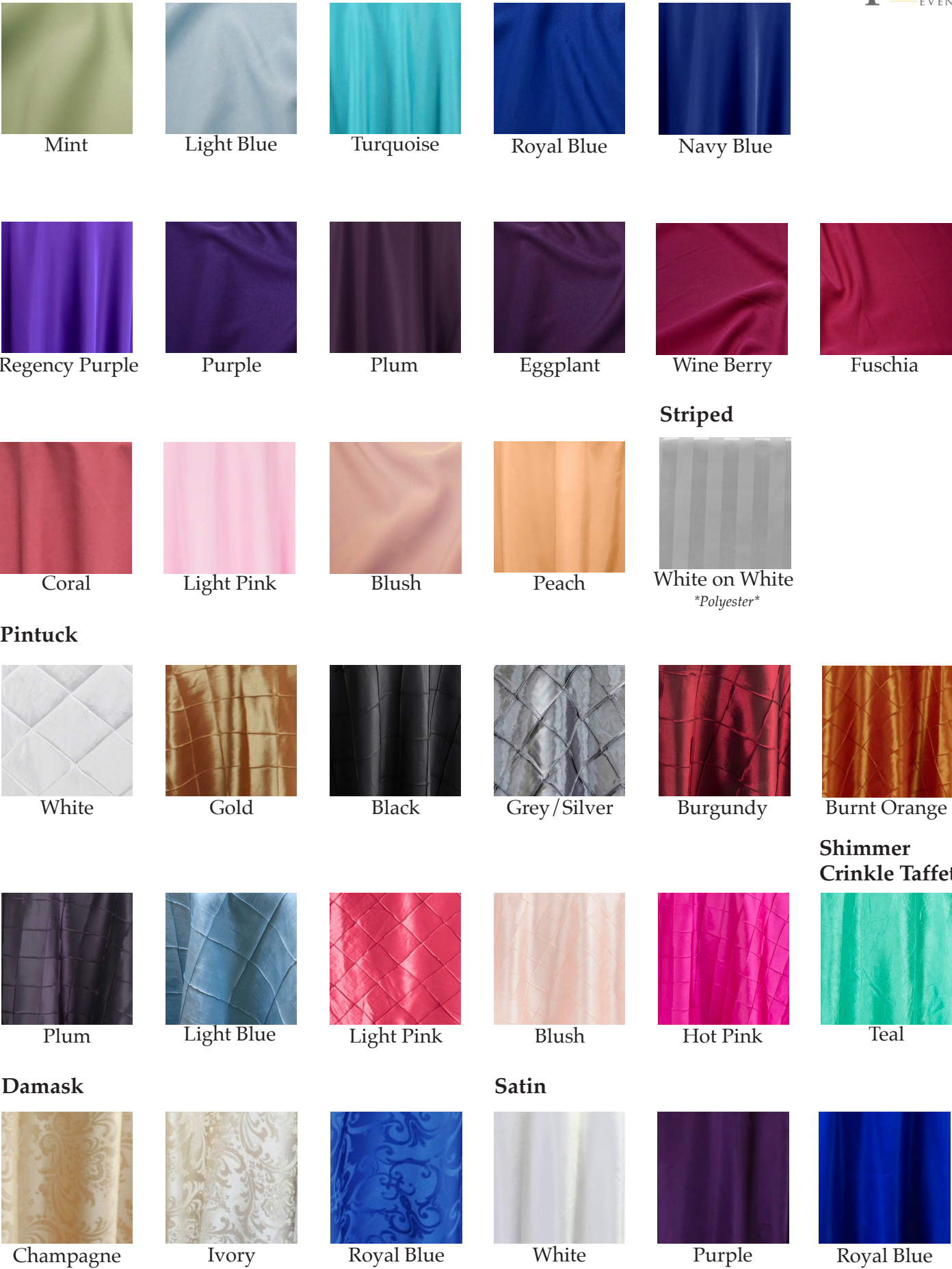
Napkins are a great way to add a small splash of color to your event, or to continue a color scheme! With a wide variety of colors, there is no question that you'll find one you love!

Colors may vary from photo. Please schedule a time to come in and look at colors in person to ensure it is the correct shade you are looking for.

Dimensions: 20" x 20" & 18"x18"



Polyester



If you are looking for a color that is not listed, please inquire. Other colors may be available to order for an additional charge.

If you are looking for a color that is not listed, please inquire. Other colors may be available to order for an additional charge.

Runners

Whether it is to complete your table setting or incorporate your color scheme, adding table runners to the center of the table are a great way to add a touch of color and tie your event all together!

Colors may vary from photo. Please schedule a time to come in and look at colors in person to ensure it is the correct shade you are looking for.

Dimensions: 14" x 108"



Satin



If you are looking for a color that is not listed, please inquire. Other colors may be available to order for an additional charge.

Satin continued...



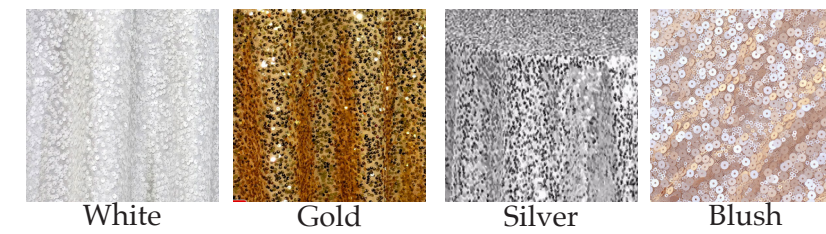
Embroidered Organza



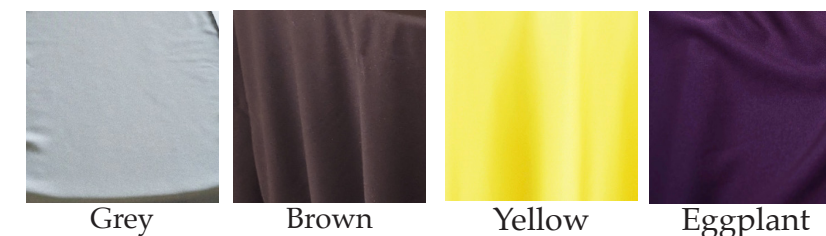
Lace



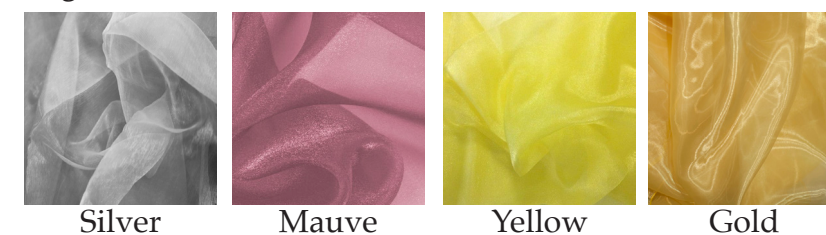
Sequin



Polyester



Organza



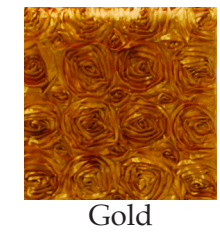
Sheer



If you are looking for a color that is not listed, please inquire. Other colors may be available to order for an additional charge.

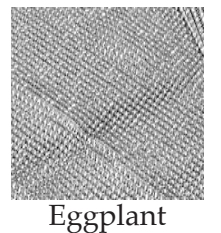


Rosette



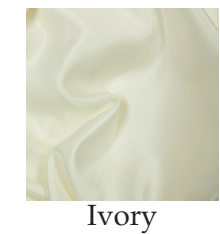
Gold

Rhinestone

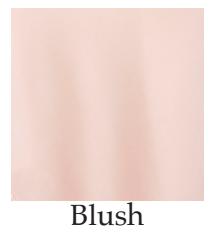


Eggplant

Lamour



Ivory



Blush

Burlap



Burlap



Chevron Burlap

Sashes

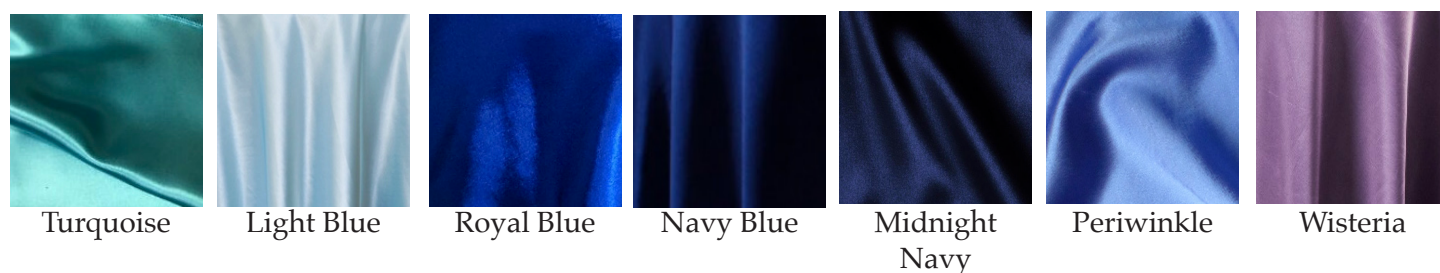
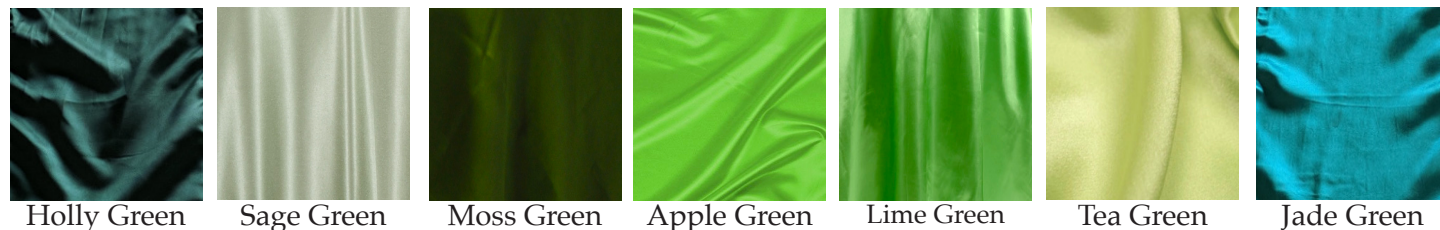
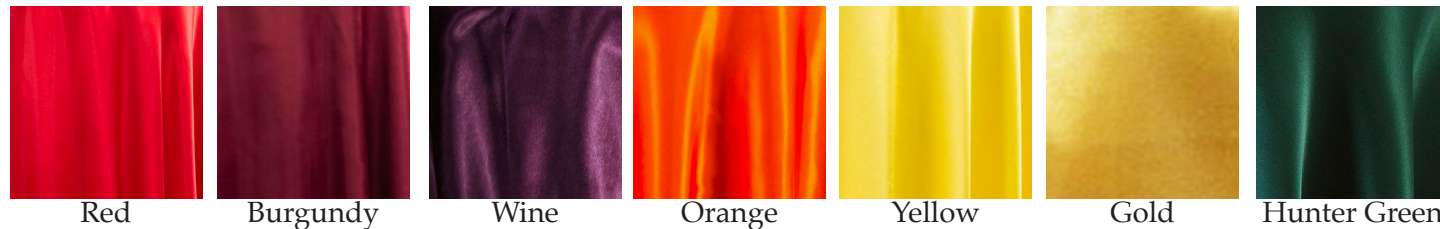
Sashes are a great way to add a pop of color to your wedding or event! We can tie them in a traditional bow or if you have a special, fun way to tie them let us know and we can do that!

Colors may vary from photo. Please schedule a time to come in and look at colors in person to ensure it is the correct shade you are looking for.

Dimensions: 18" x 18" or 20" x 20"



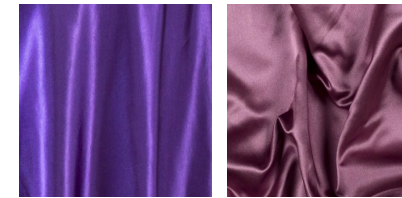
Satin



Satin continued...



Lavendar Purple



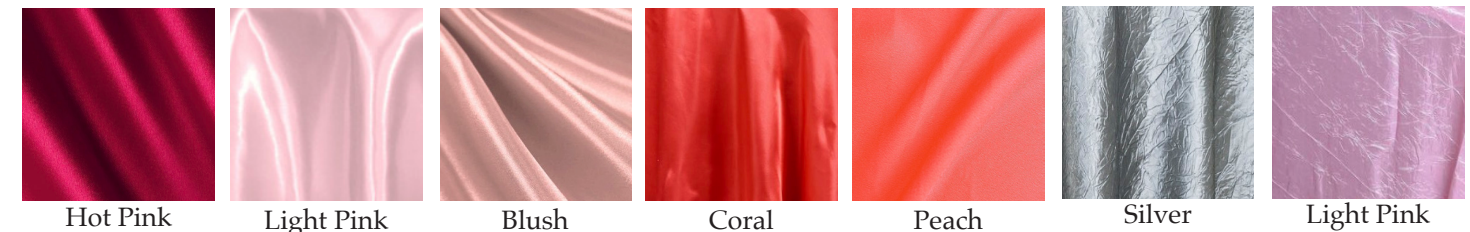
Regency Purple Mauve



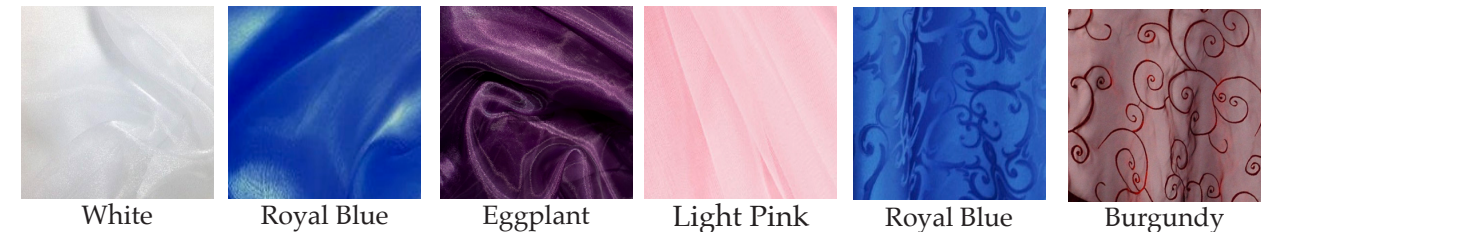
Eggplant Plum



Crinkle Taffeta



Organza



Damask

Embroidered Organza

Pintuck



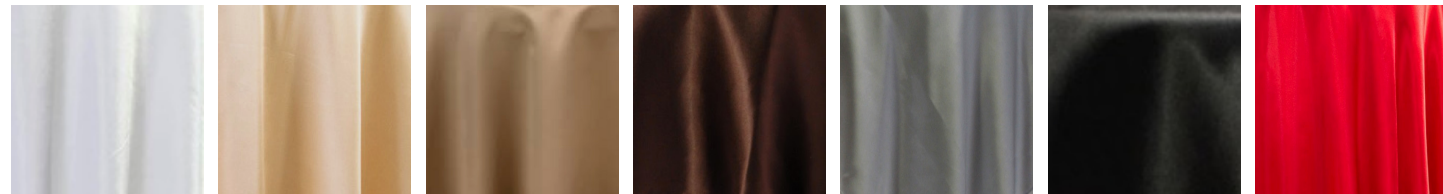
Overlays



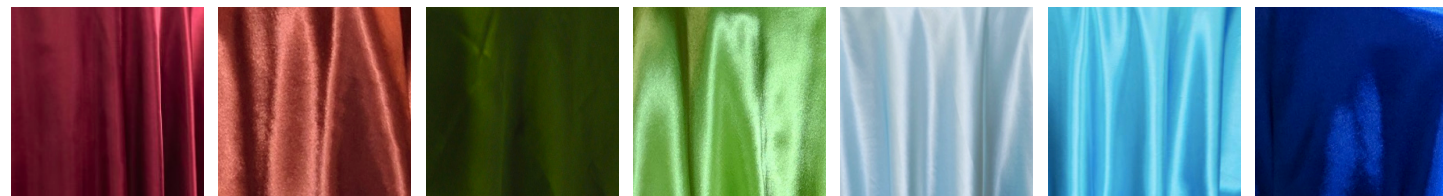
A perfect way to spice up your white linens is to add an overlay! These linens lay over the top of your table and come in a variety of colors to catch the eye of everyone while still being able to use white linens.

Dimensions: 72" x 72" Square (sizes may vary)

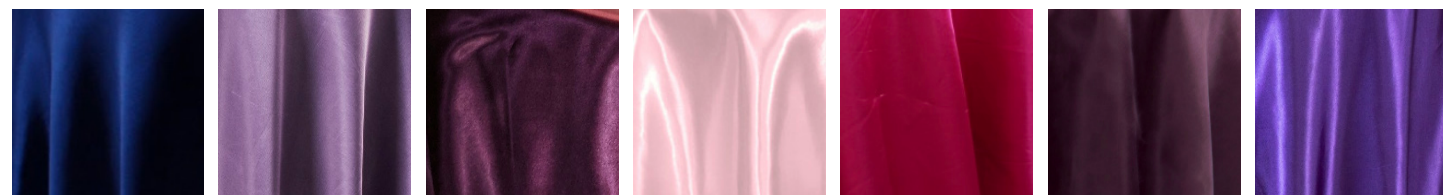
Colors may vary from photo. Please schedule a time to come in and look at colors in person to ensure it is the correct shade you are looking for



White Champagne Mocha Chocolate Brown Silver Black Red

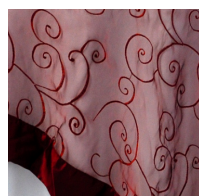


Burgundy Burnt Orange Moss Green Lime Green Light Blue Turquoise Royal Blue



Navy Blue Wisteria Wine Light Pink Hot Pink Eggplant Regency Purple

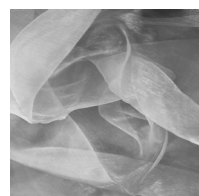
Embroidered Organza



Burgundy



Purple



Silver



Purple

Organza

Shimmer Crinkle Taffeta

Table Skirts

An elegant table skirt is an excellent extra touch to every table setting! Looks beautiful for any formal event and great for adding flare to any occasion!

Dimensions: 14' or 18' long

Can be used on any round or rectangle banquet table.



White



Ivory



Black



Brown



Ivory Lace



Red



Navy Blue

If you are looking for a color that is not listed, please inquire. Other colors may be available to order for an additional charge.

If you are looking for a color that is not listed, please inquire. Other colors may be available to order for an additional charge.

Table Spandex

Use table spandex for a sleek and fitted look for your tables. No need to worry about wrinkles, or your tablecloth falling off. We have a variety of colors for round and rectangle tables!

Dimensions: fit on 5' round and 8' rectangle tables



White 8' Rectangle



White 5' Round



Black 8' Rectangle



Royal Blue 8' Rectangle

If you are looking for a color that is not listed, please inquire. Other colors may be available to order for an additional charge.

Polyester Tablecloths

We have so many different colors and sizes of tablecloths you'll be sure to find one that matches your taste and color scheme! Choose a colored linen over white, black or ivory for no additional charge!

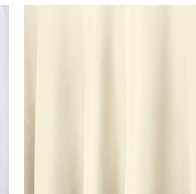
All Polyester Tablecloths are available in 120", 132", 90x132" or 90x156" (floor length)

White, Ivory and Black are also available in 90", 108", & 60x120" (lap length)

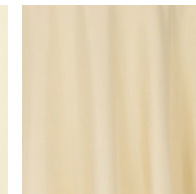
Certain colored linens are available in lap length; they are noted below the photo.



White



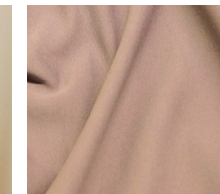
Ivory



Champagne
Available in
108" & 60x120"



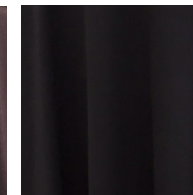
Taupe
Available in 90"



Khaki



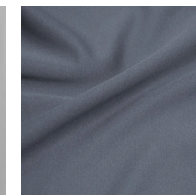
Brown
Available in
90" & 60x120"



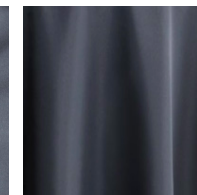
Black



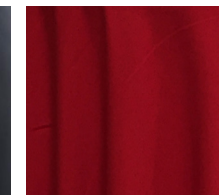
Light Grey
Available in 90"



Gunmetal Grey
Available in 90"



Dark Grey
Available in 90"



Apple Red
Available in
90" & 60x120"



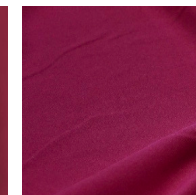
Red
Available in 90"
108" & 60x120"



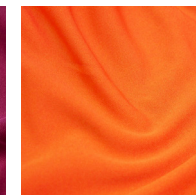
Maroon
Available in 90"



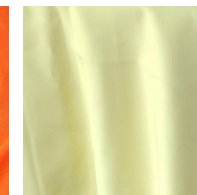
Burgundy
Available in 90"



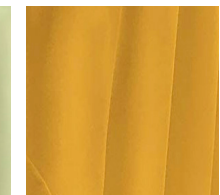
Wine Berry



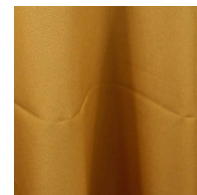
Orange
Available in
60x120"



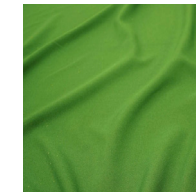
Butter
Available in 90"



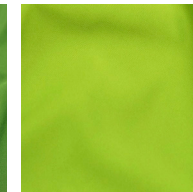
Yellow



Mustard Yellow
Available in 108"



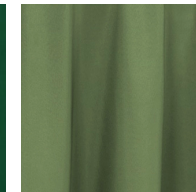
Green



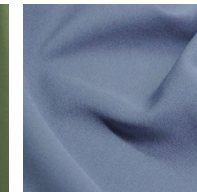
Lime Green



Kelly Green
Available in
90" & 60x120"



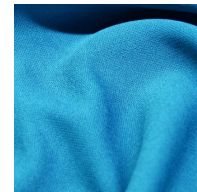
Willow Green
Available in
90"



Periwinkle



Dusty Blue



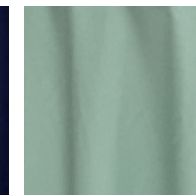
Aqua
Available in
90"



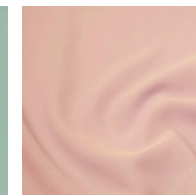
Royal Blue
Available in
90"



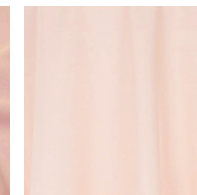
Navy Blue



Mint



Blush



Peach



Lavendar



Eggplant
Available in
90" & 108"

Specialty Tablecloths

Specialty tablecloths are the perfect way to accent your head table, cake table, accessory tables or great a glam look by covering every table! In addition to our inventory, if there's a specific color you like we're able to order it specially for you!

All Specialty Linens are available in 120" and 90x156" (floor length) only unless otherwise noted.

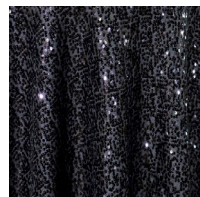
Colors may vary from photo. Please schedule a time to come in and look at colors in person to ensure it is the correct shade you are looking for.



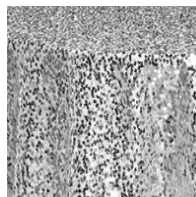
Sequin



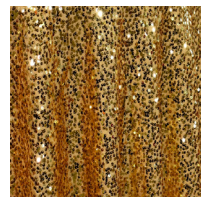
White



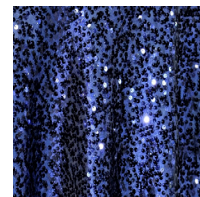
Black



Silver



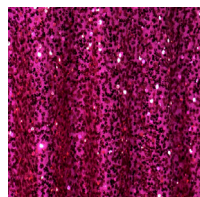
Gold



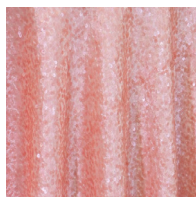
Navy Blue



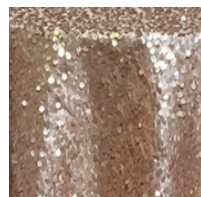
Eggplant



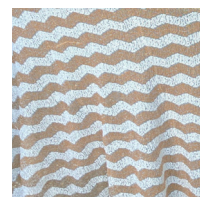
Fuschia



Light Pink

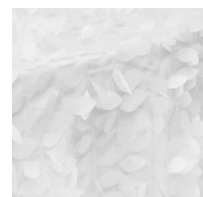


Blush



White & Khaki Chevron

Petal Taffeta



White Petal



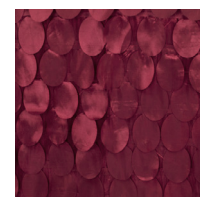
White Circle



Ivory

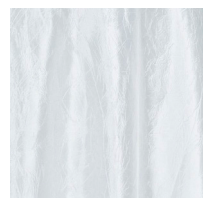


Black Forest



Red

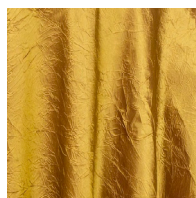
Shimmer Crinkle Taffeta



White



Ivory



Gold

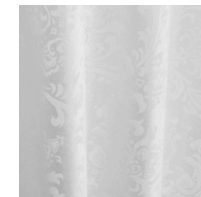


Blush

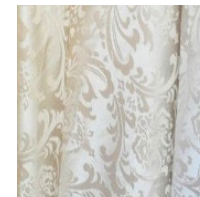


Coral

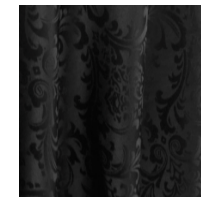
Damask



White



Ivory



Black

English Lace



Ivory

Chevron

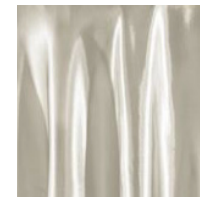


White & Khaki

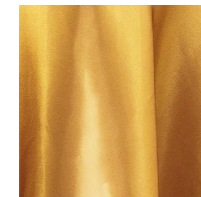
Satin



White



Ivory



Gold

Lamour

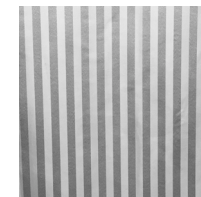


Champagne



Blush

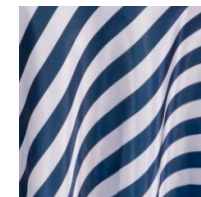
Striped



White & White
polyester

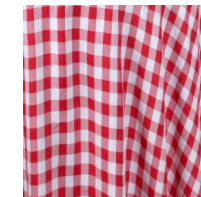


Black & White
satin



Navy & White
satin

Gingham



Red & White



Blue & White

Rosette



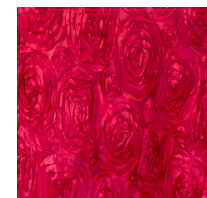
White



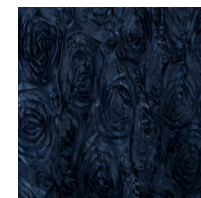
Ivory



Champagne



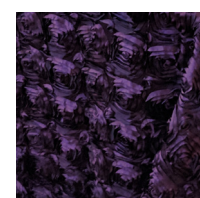
Red



Navy Blue



Royal Blue



Eggplant



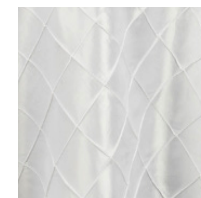
Blush



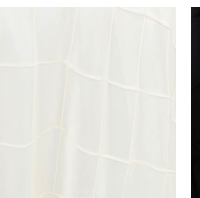
Light Pink

Pintuck

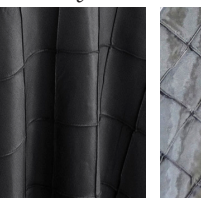
Pintuck only available in lap length unless otherwise noted.



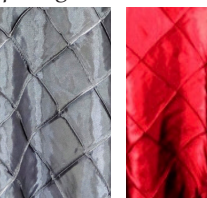
White



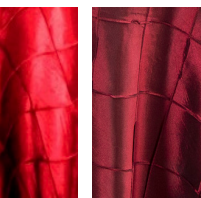
Ivory
Avl in 132"



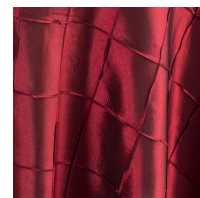
Black



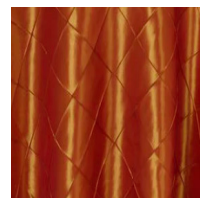
Grey



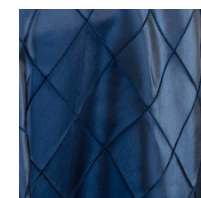
Red



Burgundy



Orange



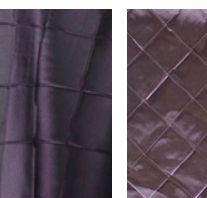
Dark Blue



Light Blue



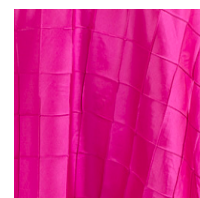
Light Pink



Plum



Wisteria



Hot Pink